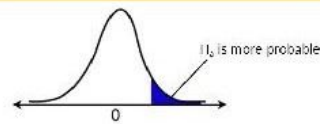


What is Methodological Naturalism?

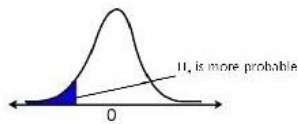
- Methodological naturalism holds that science is to be done without reference to supernatural or metaphysical causes;
- It also refers to a methodological assumption in the philosophy of religion that observable events are fully explainable by natural causes without reference to the supernatural, esoteric or non-physical.

Hypothesis Testing



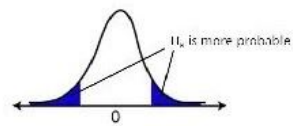
Right-tail test

$H_a: \mu > \text{value}$



Left-tail test

$H_a: \mu < \text{value}$

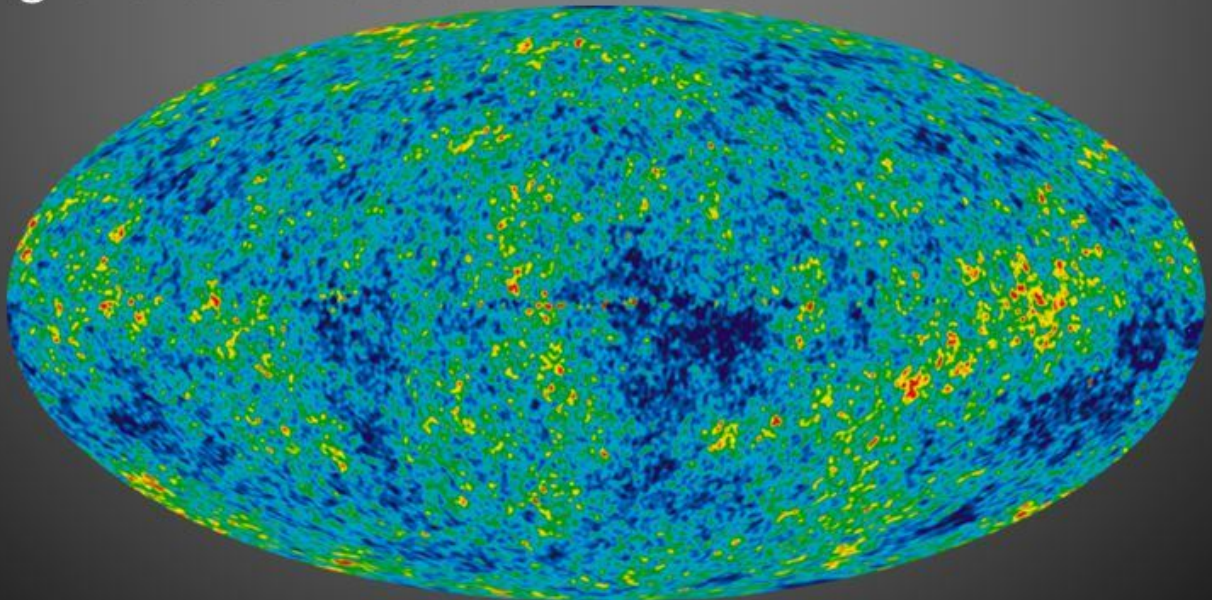


Two-tail test

$H_a: \mu \neq \text{value}$

Cosmic Microwave Background

- CMB is left over radiation from the Big Bang.
- This radiation fills the universe in the dark space.
- It is the most important distinction between The Big Bang and other creation theories.



To Apply Occam's Razor:

1. Determine how many assumptions and conditions are necessary for each explanation to be correct.
2. If an explanation requires extra assumptions or conditions, demand evidence commensurate with the strength of each claim.
3. Extraordinary claims require extraordinary evidence.

Criticism of Dualism

• **Gilbert Ryle (1900 – 1976)**

- *The Ghost in the Machine*
- The Ghost is the mind and the machine is the body

**If a person is drinking alcohol,
they must be 18 years or older**

Beer

Water

25

16

Which card(s) must be turned over to
determine whether or not the rule has been followed

RUSSELL'S TEAPOT

If I were to suggest that between the Earth and Mars there is a china teapot revolving about the sun in an elliptical orbit, nobody would be able to disprove my assertion provided I were careful to add that the teapot is too small to be revealed even by our most powerful telescopes.



But if I were to go on to say that, since my assertion cannot be disproved, it is an intolerable presumption on the part of human reason to doubt it, I should rightly be thought to be talking nonsense. If, however, the existence of such a teapot were affirmed in ancient books, taught as the sacred truth every Sunday, and instilled into the minds of children at school, hesitation to believe in its existence would become a mark of eccentricity and entitle the doubter to the attentions of the psychiatrist in an enlightened age or of the Inquisitor in an earlier time.
- Bertrand Russell

Stephen Gould's NOMA

- Gould described the relationship between 'Science' and 'Religion' as '**Non-Overlapping Magisteria**' – areas of authority.
- In the same way you can be a sportsman and a musician, you can be a scientist and a theologian. One does not exclude the other.



DEFINITION

- Meta-analysis is a **quantitative** approach for **systematically combining** results of **previous research** to arrive at **conclusions** about the body of research.
 - Quantitative: numbers
 - Systematic: methodical
 - Combining: putting together
 - Previous research: what's already done
 - Conclusions: new knowledge
- A study collects data from individual subjects
 - (such as 100 subjects = 100 "data points")
- A meta-analysis collects data from individual studies
 - (such as 100 studies = 100 "data points")





**THE COCHRANE
COLLABORATION®**

'Justification' vs 'discovery'

Context of justification: *normative*, focus on method; prescribing criteria for holding a theory true, acceptable or justified, logically or empirically (→ positivism).

Context of discovery: *description* of the historical, social and psychological circumstances and influences that were relevant to the invention or discovery of scientific theories: who, where and when? (→ more or less relativistic views of science).

"N" RAYS

A COLLECTION OF PAPERS COMMUNICATED
TO THE ACADEMY OF SCIENCES
*WITH ADDITIONAL NOTES AND INSTRUCTIONS FOR
THE CONSTRUCTION OF PHOSPHORESCENT
SCREENS*

BY
R. BLONDLOT

CORRESPONDENT OF THE INSTITUTE OF FRANCE
PROFESSOR IN THE UNIVERSITY OF NANCY

TRANSLATED BY
J. GARCIN
INGÉNIEUR E.S.E., LICENCIÉ-ÈS-SCIENCES



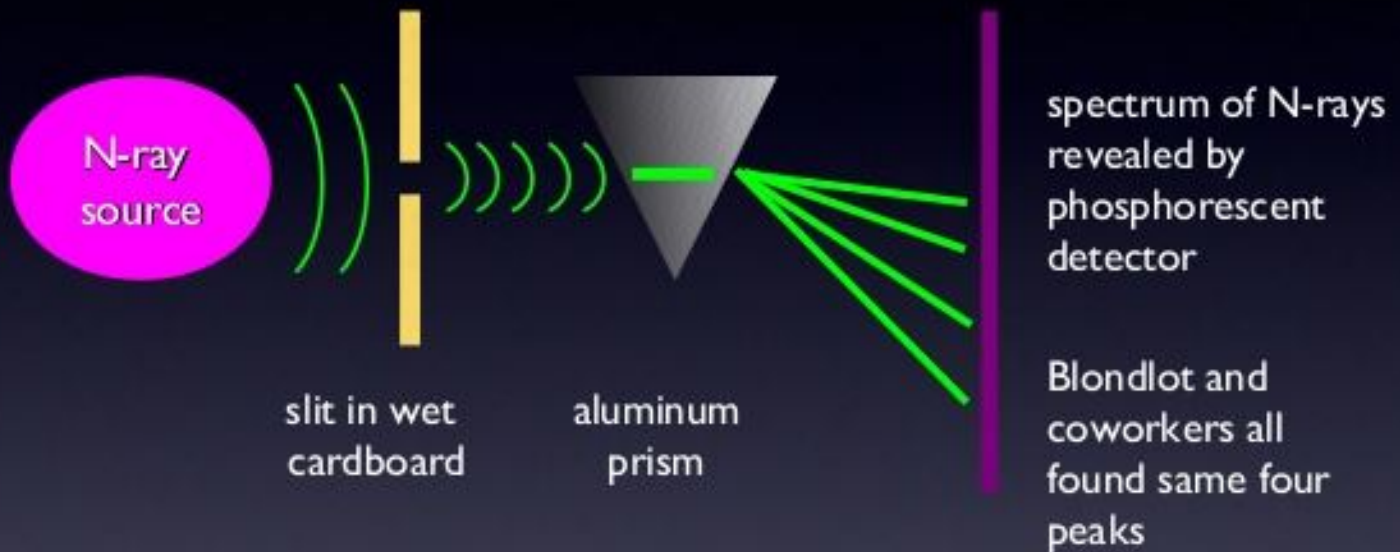
*WITH PHOSPHORESCENT SCREEN AND OTHER
ILLUSTRATIONS*

LONGMANS, GREEN, AND CO.
39 PATERNOSTER ROW, LONDON
NEW YORK AND BOMBAY

1905

All rights reserved

Oops...



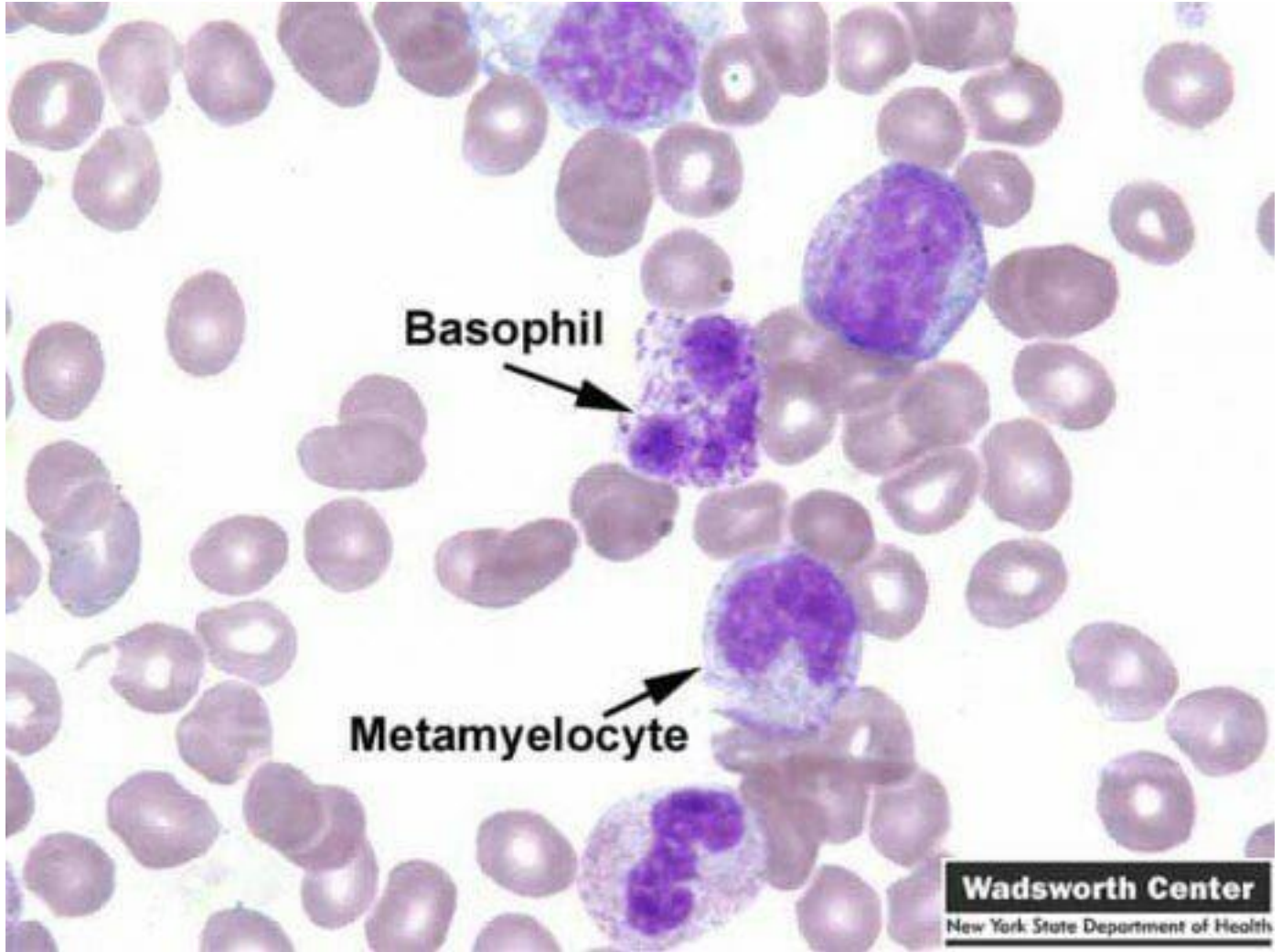
In the dark, Wood *removed* the prism ...
should have **destroyed** the diffraction pattern on the detector.
But Blondlot and coworkers **still got perfect results!**



Robert W. Wood
1868 - 1955



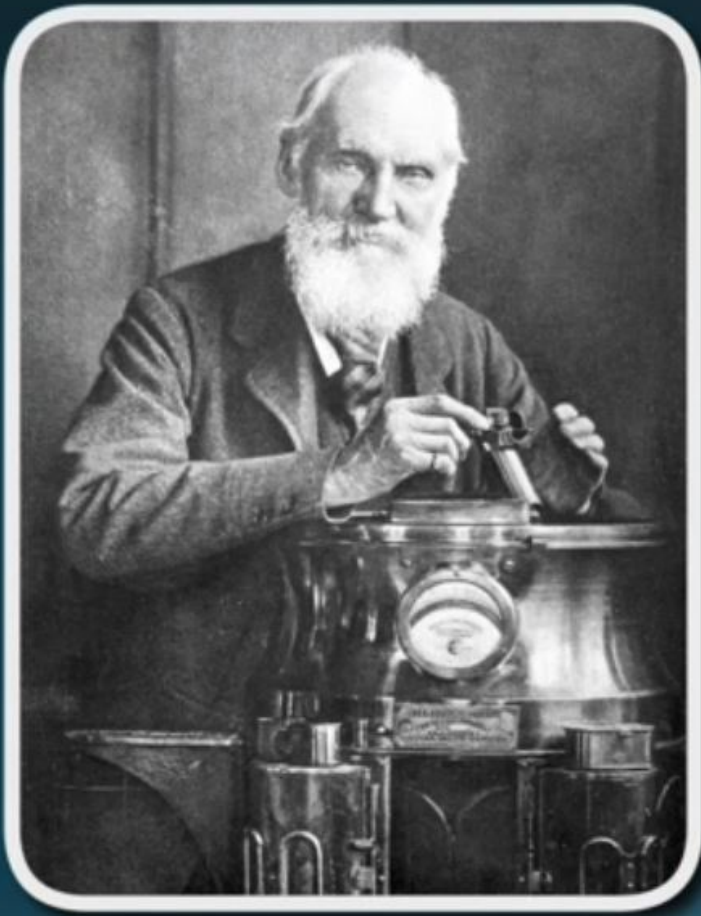
Jacques
Benveniste
1935 - 2004



Basophil

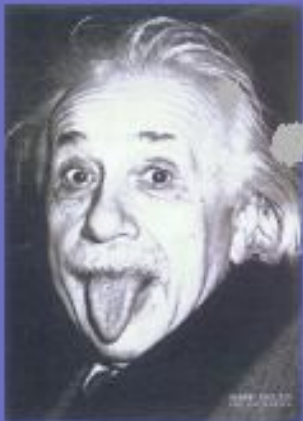
Metamyelocyte

Wadsworth Center
New York State Department of Health



**William Thomson
(Lord Kelvin)
1824 - 1907**

The Cosmological Constant



$$H^2 = \frac{8\pi G\rho}{3} - \frac{k}{a^2} + \frac{\Lambda}{3}$$

- ✦ Einstein introduced a **cosmological constant** Λ (vacuum energy) into GR to ensure a static universe.
- ✦ By tuning Λ , attractive gravity due to matter density can be balanced by the “repulsive” gravity, or negative pressure, of Λ

Edwin Hubble

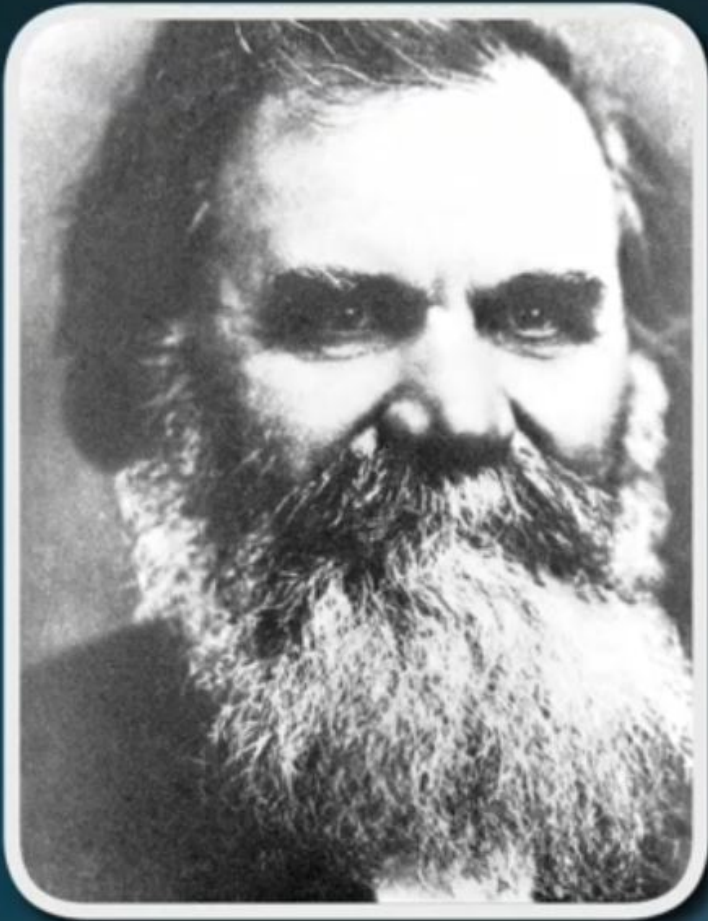
(1889-1953)

- Measured distances to nearby galaxies using Cepheid variables
- Galaxies are islands of stars
- Developed a classification scheme for galaxies.
- Discovered the Expansion of the Universe
- Space telescope named after him!



7 Ways to Identify Pseudoscience

- 1. The use of psychobabble – words that sound scientific and professional but are used incorrectly, or in a misleading manner.**
- 2. A substantial reliance on anecdotal evidence.**
- 3. Extraordinary claims in the absence of extraordinary evidence.**
- 4. Claims which cannot be proven false.**
- 5. Claims that counter established scientific fact.**
- 6. Absence of adequate peer review.**
- 7. Claims that are repeated despite being refuted.**



D.D. Palmer
1845 - 1913

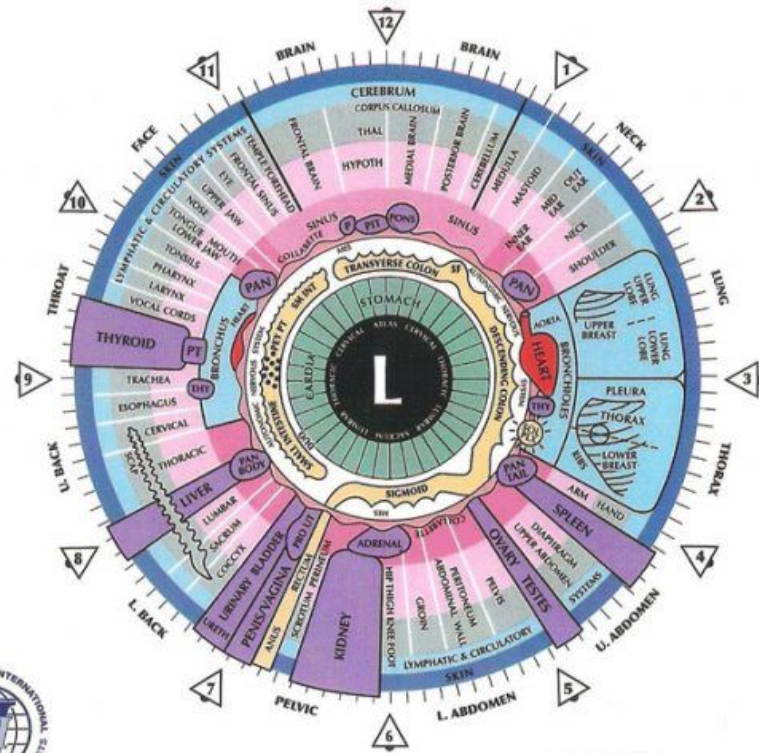
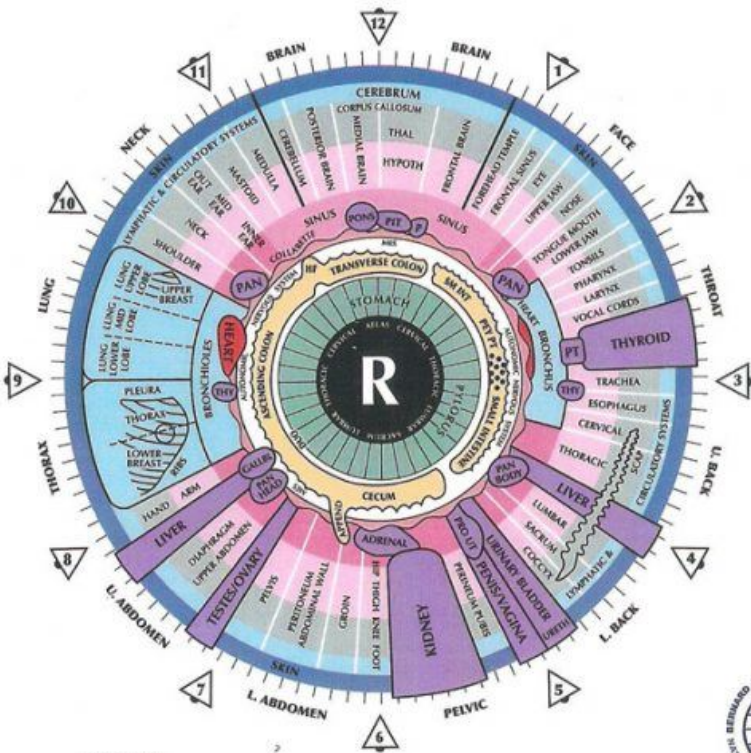
Subluxation
Theory

“ **SUBLUXATION** ”

A small misalignment of a spinal segment (vertebra), causing irritation to a nerve, resulting in a loss of normal function ”



IRIDOLOGY CHART



- IRIS ZONES**
- STOMACH - NUTRITIVE ZONE
 - INTESTINES - NUTRITIVE ZONE
 - BLOOD & LYMPH - HUMORAL ZONE
 - MUSCULATURE
 - BONY STRUCTURE
 - SUPERFICIAL LYMPH & BLOOD
 - SKIN & ORIFICES
- CILIARY ZONE**



Developed by Bernard Jensen, D.C., Ph.D.
with revisions by Ellen Jensen, Ph.D., D.Sc.

© 2004
Phone # 760-291-1255
www.bernardjensen.org

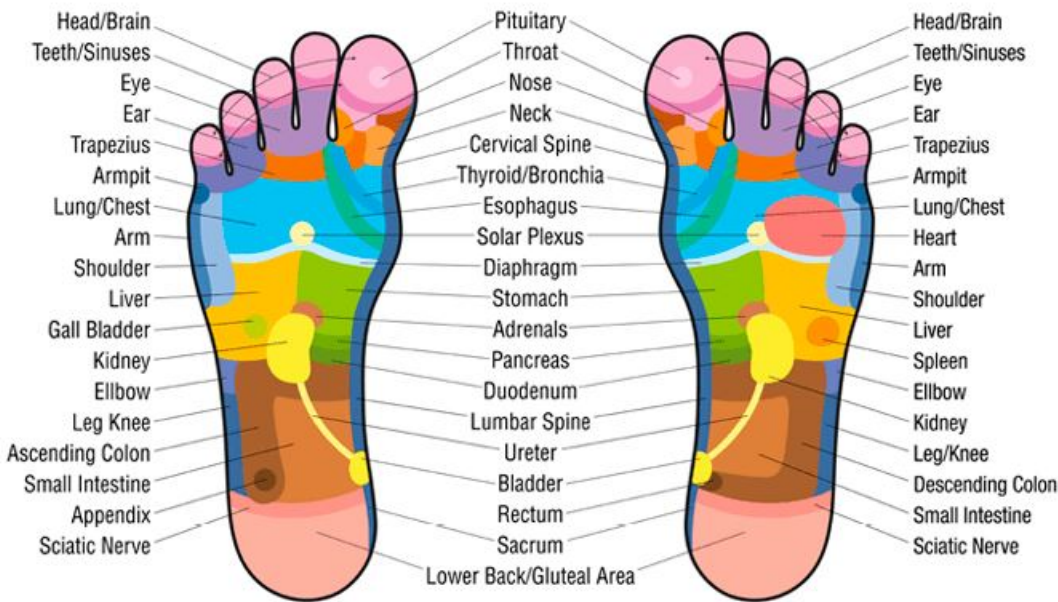
ABBREVIATIONS

APPEND	Appendix	PEY PT	Peyers Patches
DUO	Duodenum	PIT	Pituitary
GALLBL	Gallbladder	PRO	Prostate
HF	Hepatic Flexure	SF	Splenic Flexure
HYPOTH	Hypothalamus	SCAP	Scapula
MES	Measentery	SOL PLX	Solar Plexus
F	Pineal	THAL	Thalamus
PT	Parathyroid	THY	Thymus
PAN	Pancreas	URETH	Urethra

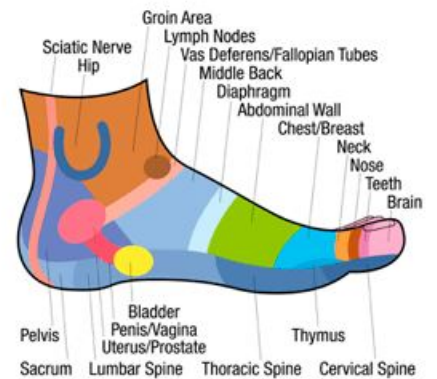
Foot Reflexology Chart

right sole

left sole



medial side of both feet



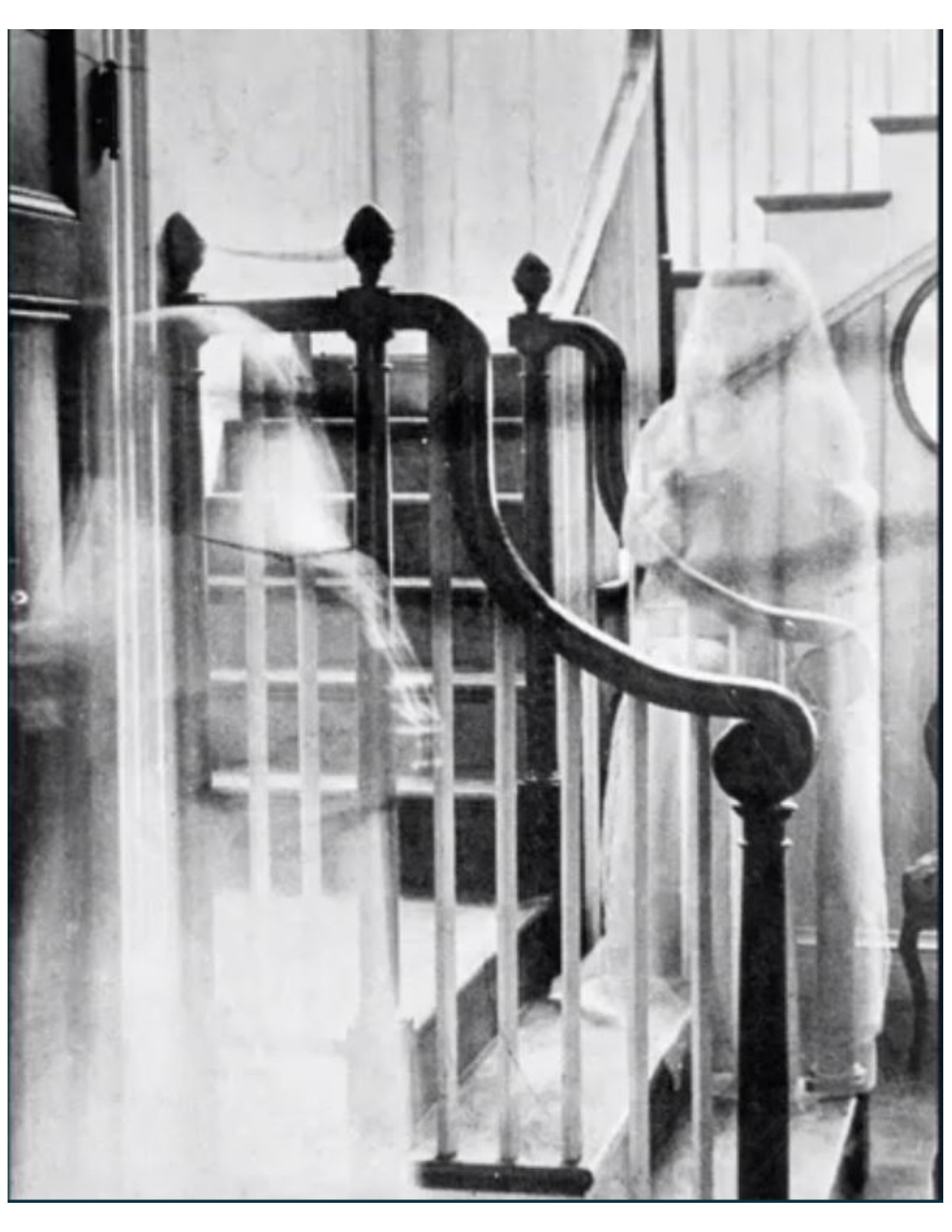
lateral side of both feet



“Iridology will not show or name a specific disease but provides information about the body tissues which indicate tendencies toward conditions of 'dis-ease,' often before symptoms appear... Iridology will not reveal surgery performed under anesthesia as nerve impulses are discontinued.

Iridology cannot locate parasites, gallstones, or germ life, but will indicate the presence of inflammation and toxic conditions which are a refuge for their development. It will not show pregnancy, as that is a normal function of the female body.”









Electromagnetic Radiation Detector

Hypnagogic Hallucination

- **Definition:** A hypnagogic hallucination is a vivid, dream-like sensation that is heard, seen or felt and that occurs near the onset of sleep. It is one of the four cardinal symptoms of [narcolepsy](#).
- **Examples:**
- As I fall asleep, I experience intense hypnagogic hallucinations and imagine people in my room.



Psi/Psychic/ESP/Anomalous Cognition

Having information that could not have been gained through the known senses.

- **Telepathy**: Info from another **person**
- **Clairvoyance**: Info from another **place**
- **Precognition**: Info from the **future**
- **Correlation**: Simultaneous access to info

For **proof** -> Source **isn't** important.

For **explanation** -> Source **is** important.



**WHAT IS IT
TRYING TO
TELL US?**

TECH
INSIDER